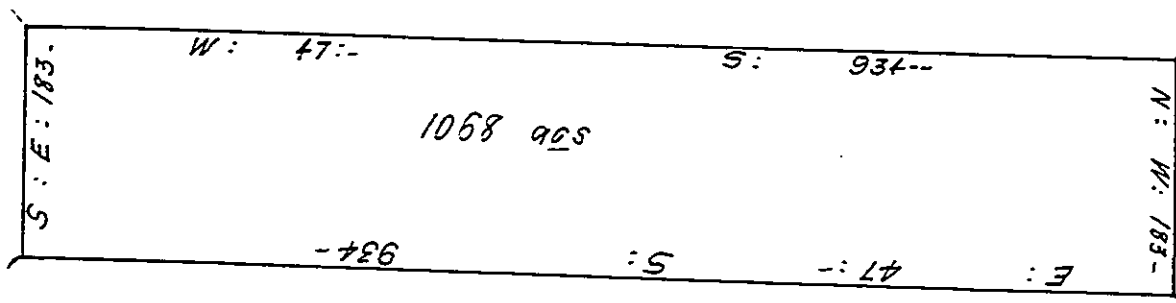


Evatt ap Hugh



Pursuant to a War^t from y^e Commiss^{rs} of prop^{ty} beareing date y^e 29th day of y^e 7th m^o 1702 directed unto me I do Certify that I have Reasurveyd unto Evatt ap Hugh a Certaine tract of Land in the Township of Gwynedd begining at a black oke being a Corner deviding it from William Johns' Land from thence South East: 183 perches to a Corner Whit oke being a Corner deviding it from Robert Joatts: Land from thence by a Line of Marked trees & y^e same Land West 47 degrees: South 934 perches to a Stake set in the ground from thence by a Line of Marked trees: North West 183 perches to another Stake Set in the ground deviding it from y^e said Will^m Johns: Land thence by a Line of Marked trees & y^e same Land 934 perches to y^e place of begining Containeing 1068: acrs of Land and is according to y^e bounds above described Returnd into y^e Generall Survey^{rs} Office at Philladelphia y^e 21st day of y^e 10th m^o Next Ensiueing y^e Date aors^d

P^r David Powell

IN TESTIMONY that the above is a copy of the original remaining on file in the Department of Internal Affairs of Pennsylvania, made conformably to an Act of Assembly approved the 16th day of February, 1833, I have hereunto set my Hand and caused the Seal of said Department to be affixed at Harrisburg, this First day of February 1910

Henry Howard

Secretary of Internal Affairs.